

# Chief Executive Officer

Boort District Health.



# About Boort District Health

---

Boort District Health is a small rural health service located in central Victoria, providing a diverse range of health services to Boort and neighbouring communities.

Boort District health has a catchment population of approximately 3,455 people.

Boort District Health has been providing health services to the community since 1961. Services provided include: medical inpatient care; palliative care; aged care; ambulatory care through the urgent care centre, general nursing and diagnostic monitoring services; physiotherapy services in acute, aged care and community settings; podiatry services in aged care and community settings; community outreach including district nursing, planned activity and social support services; and two dental chairs that provide services to public and private patients and a children's dental service.

*For more information please click on the following link to be taken to the website <http://bdh.vic.gov.au/>*

## Our Vision

To improve and enrich the health and wellbeing of the Boort community and the surrounding districts.

## Our Mission

To lead and collaborate in health initiatives that respond to the changing needs of our community including access to quality person centred health and care services, prevention and early intervention.

## Our Values

- Integrity – honesty, transparency and accountability
- Respect – dignity of the individual, rights and self-determination, fair, kind and considerate
- Inclusivity – equality in the diversity of gender, culture, socio-economic status, spiritual beliefs
- Collaboration – working in partnership for better health outcomes
- Excellence – best practice and learning culture informed by evidence



# About Boort District Health



## STRATEGIC PLAN 2019-2022 OUR HEALTHY FUTURE TOGETHER



The Boort District Health Strategic Plan 2019-2022 has an overarching "Partnerships and Collaboration" approach. The four Strategic Directions underpin planning and action across the organisation and into the community. By developing new and strengthening current partnerships with government, community and other health system organisations Boort District Health can increase the opportunities for better health, better access and better care for the community it serves.



# About Boort District Health

---

## Acute Services

7 single, ensuite acute beds are provided, including one Transitional Care Program (TCP) bed-based bed and a family room with courtyard. Admission to our acute services is through the Visiting Medical Officers.

## Oral Health Services

Public and private oral health services are offered to the community. Within the public program, outreach services are offered to other towns. The service includes a preventative program to children and schools as well as oral health service to residents in care.

## Urgent Care Centre

Boort District Health Urgent Care Centre (UCC) offers two (2) urgent care treatment trolleys and one (1) treatment room, 24 hours a day, 7 days a week. This service is supported by an on call system.

## Spanner Café

The Spanner Café is the communal hub of the Health Service, a place for residents, patients, clients, visitors and community to catch up over a cup of tea or coffee, or enjoy a delicious lunch prepared by our Café staff.

## Residential Aged Care - Loddon Place

Boort District Health operates twenty-five (25) permanent residential aged care places, all single rooms with individual ensuite facilities

## Primary Care Services

A number of Allied Health services are facilitated within Boort District Health including Physiotherapy, Podiatry, Health Education, counselling and Health Promotion.

## Community and Home Based Care

Outreach community support programs are coordinated by Boort District Health. These include Meals on Wheels, District Nursing, Transitional Care Planning (TCP) and Planned Activity Groups including exercises, art and craft and community wellbeing programs.



# About Boort District Health

## REPORT OF OPERATIONS

### Financial Information

	2020 \$	2019 \$	2018 \$	2017 \$	2016 \$
<b>OPERATING RESULT*</b>	<b>(205,858)</b>	<b>(44,527)</b>	<b>(273,166)</b>	<b>(510,095)</b>	<b>(655,291)</b>
Total revenue	7,306,138	7,364,187	7,432,971	9,520,608	14,447,818
Total expenses	(8,239,092)	(7,859,888)	(7,475,041)	(7,835,925)	(7,721,808)
<b>Net result from transactions</b>	<b>(932,955)</b>	<b>(505,701)</b>	<b>(42,070)</b>	<b>1,684,683</b>	<b>6,726,010</b>
Total other economic flows	(60,506)	(10,168)	17,869	2,229	(25421)
<b>Net result</b>	<b>(993,461)</b>	<b>(515,869)</b>	<b>(24,201)</b>	<b>1,686,912</b>	<b>6,700,589</b>
Total assets	16,462,562	16,347,257	23,284,243	19,469,074	18,037,794
Total liabilities	3,975,687	3,357,518	4,584,308	2,450,798	2,706,430
<b>Net assets/Total equity</b>	<b>16,932,233</b>	<b>17,925,693</b>	<b>18,699,935</b>	<b>17,018,276</b>	<b>15,331,364</b>

\* The operating result is the result for which the health service is monitored in its Statement of Priorities.

### Reconciliation of Net Result from Transactions and Operating Result

	2019-20 \$
<b>Net operating result *</b>	(205,858)
Capital purpose income	276,892
Specific income	1,888
COVID-19 State Supply Arrangements - Assets recieved free of charge or for nil consideration under the State Supply	NA
Assets provided free of charge	NA
Assets received free of charge	NA
Expenditure for capital purpose	(90,001)
Depreciation and amortisation	(976,382)
Impairment of non-financial assets	NA
Finance costs (other)	NA
<b>Net result from transactions</b>	<b>(932,955)</b>

This financial statement is taken from the 2019/20 Annual Report please click on this link for more information <http://bdh.vic.gov.au/publications/>

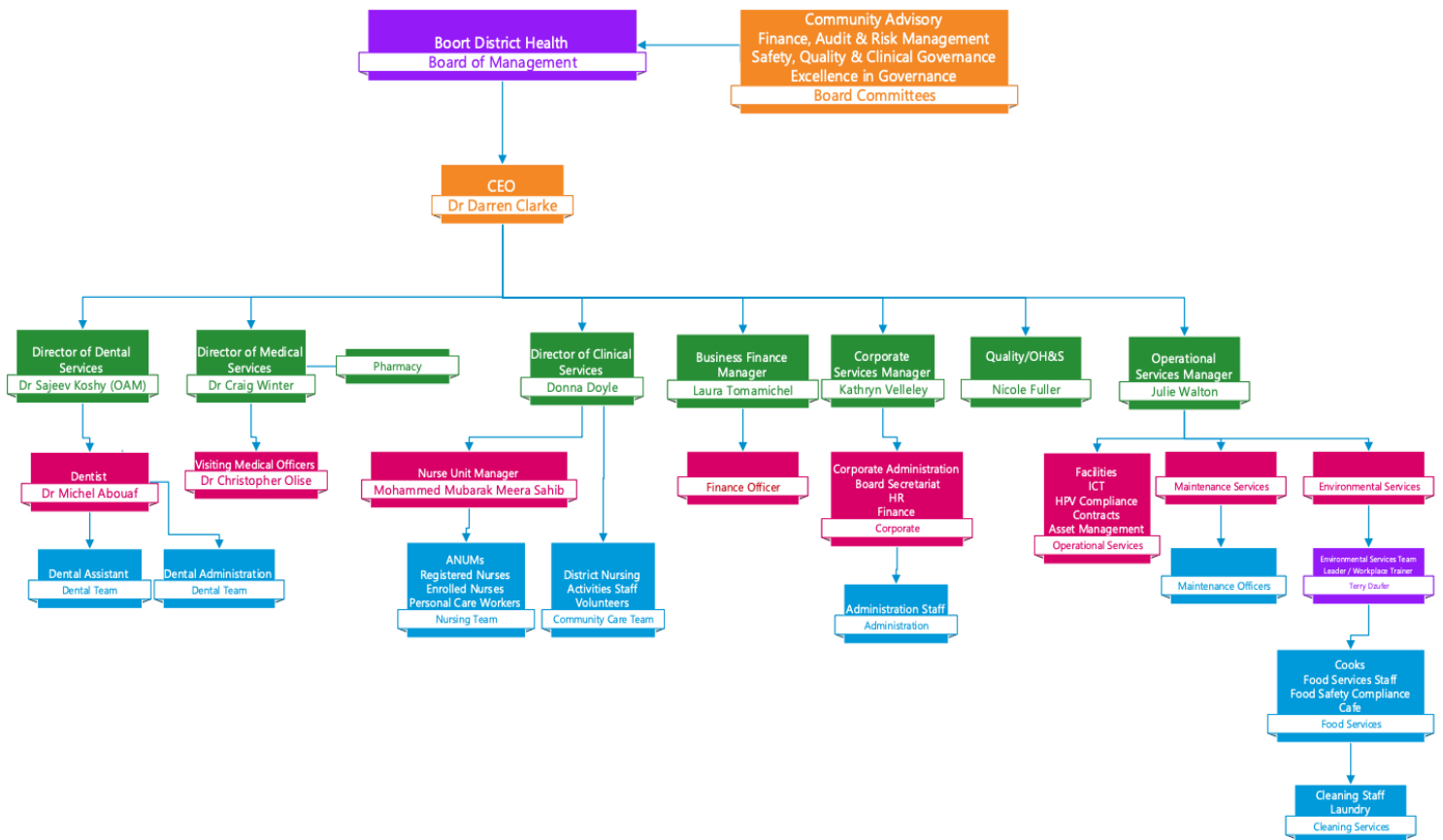
### Workforce data

Hospitals labour category	JUNE current month FTE*		Average Monthly FTE**	
	2019	2020	2019	2020
Nursing	18.72	19.90	19.99	18.97
Administration and Clerical	7.80	5.34	8.53	6.73
Medical Support	3.27	2.34	2.85	2.75
Hotel and Allied Services	20.56	21.81	19.67	22.09
Medical Officers	0.11	0.11	0.17	0.11
Ancillary Staff (Allied Health)	1.70	1.86	1.65	1.96
<b>Grand Total</b>	<b>52.16</b>	<b>51.36</b>	<b>52.87</b>	<b>52.60</b>



# Organisation Structure

## Boort District Health Organisation Chart April 2021





# The Role

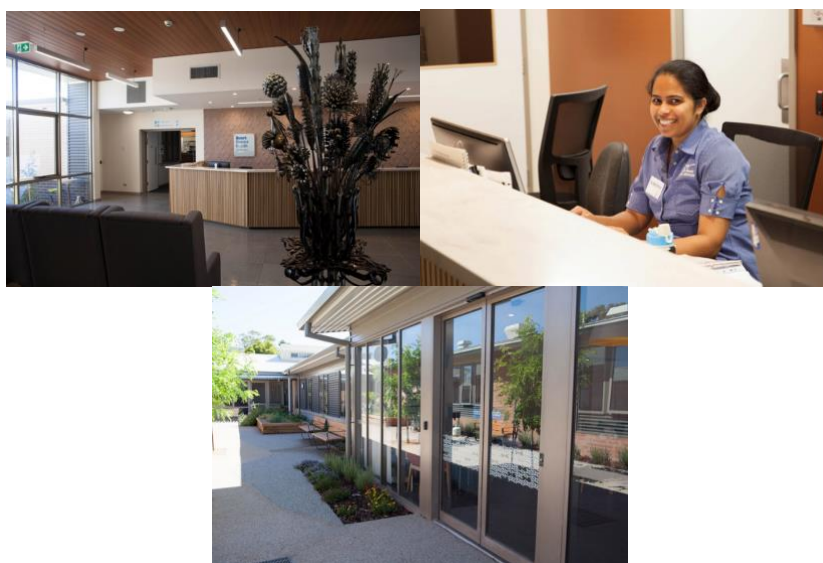
---

## Position Purpose

It is the vision of the Board that the Boort District Health Service “BDHS” will be innovative, financially sound and committed to excellence in healthcare. BDHS aims to be a leading district health service dedicating its resources, talents and skills to improve the health status of the community. We will deliver comprehensive services of a high quality in a compassionate, efficient and affordable manner.

To achieve this vision, the Chief Executive Officer will:

1. Advocate and advance an integrated health care service model embracing acute, aged and community care, by working closely with relevant stakeholders including government agencies, clinicians, primary health care providers and the local community.
2. Provide leadership to implement innovative service models, taking into account population health and the Board’s belief that the health of the community is best achieved through education, prevention strategies and wellness services.
3. Deliver leadership and direction to ensure BDHS continues to strive for best practice, encompassing provision of compassionate health services for all regardless of race, religion, creed, gender, age, national origin, disability or social and economic status.
4. Implement the strategic, annual and quality plans as approved by the Board.
5. Articulate the vision of BDHS to all relevant stakeholders (including its
6. employees).
7. Make optimal use of human, material and financial resources and report to the
8. Board on the overall management and administration of BDHS.



# Key Selection Criteria

---

## Minimum Qualifications

Must conform to the Department of Health guidelines for the appointment of a Chief Executive Officer.

## Experience

Capacity to manage and provide leadership in a multidisciplinary service environment

Substantial knowledge of and experience in public sector health services at a senior management level, including health administration, health law, hospital planning and organization, financial management and a broad understanding of principles of community health.

## Technical Skills

Demonstrated skills and knowledge for the concepts and practices of strategic management and organizational change.

Superior negotiation, consultative and interpersonal skills in an environment of change and evolution

Substantial motivational, leadership, strategic awareness and management skills

## Workplace Competencies

Sound judgment and decision making Ability to lead and motivate teams Highest standards of professional ethics.

*For more information please refer to the Position Description on the HRS website*





# Remuneration

---

The employee will be appointed in accordance with the Department of Health's Health Executive Employment and Remuneration Policy and Guideline Rates.

A three (3) year contract with a Total Remuneration Package (TRP) in the range of \$125,539 to \$219,913 will be negotiated with the successful applicant.

The TRP is inclusive of:

- Base Salary
- Superannuation

Other Benefits Include:

- Salary Packaging

## How to Apply

Applications should include a:

- Covering Letter incorporating a response to the Key Selection Criteria;
- Current CV; and
- Completed Application Form (available on the HRS web site).

Applications can be lodged online via the HRS web site or by email at [hrsa@hrsa.com.au](mailto:hrsa@hrsa.com.au)

Applications Close: 15 November, 2021

## Further Information

Jo Lowday  
Director  
Health Recruitment Specialists  
0400 158 155



# Why Work in Boort

---

The town of Boort was established around the banks of Little Lake Boort in the early 1840's. Boort is the Aboriginal name meaning, "smoke from the hill"; however, the town in recent times has become known as the "Northern Oasis" being surrounded by some of the healthiest wetlands in Northern Victoria.

Boort is situated within the Shire of Loddon, Victoria and is approximately 100 kilometres north of Bendigo and 270 kilometres North West of Melbourne.

Today the local community of Boort boasts a population of about 1,000 people and services a wider base of 2,300 people from the surrounding districts.

The local economy is very much agricultural based and until recently it had long been steeped in the fine traditions of grains sheep, wool and beef cattle. The Boort agricultural base has shifted to olives, grapes, tomatoes and is continually diversifying to other crops.

For more information:

Loddon Shire Council <http://www.loddon.vic.gov.au/>

Boort District School <http://www.boortds.vic.edu.au/>

Boort Tourism <http://boort.com.au/>

## Six (and more) reasons to visit Boort

*Source: Richard Cornish, The Saturday Age September 21, 2013*

### 1. It's Showtime!

In October every year, local people celebrate the Boort Show. In 2014, Boort celebrated its 128th annual show. The agricultural show, with information sessions such as "How to Prepare Your Chooks", the Victorian Yard Dog Association state championships and a scone back off draw visitors from across Victoria. There is a wide range of exhibits both ultra-modern farm machinery and antique, sculpture competition, shearing competition to horse events and cookery, plants, photography, crop and vegetable exhibits. The show continues after dark with spit roasts, band and fireworks.

More details: [www.boort.com.au](http://www.boort.com.au)



# Why Work in Boort

---

## 2. Piccoli's Spanner Sculptures

Displayed in John and Sonia Piccoli's country garden are over 25 unique life size and larger than life sculptures, including an iconic shearer, a family of deer, a pair of fighting stallions, a Mallee bull, intricate garden seats and many more. John makes the sculptures by welding together antiques through to modern day spanners. The tallest sculpture, "The Marlin", is over 7m tall, weighs 1200 kgs and is made from 3500 spanners.

Please note: Piccoli's spanner sculptures are closed during July

Star Spanner Garden Tours, Private Garden Tours by Appointment Only

## 3. Pickled green tomatoes, olives...

Boort has a diverse range of local produce. As an example, producers' welcome visitors at Simply Tomatoes and Aussie Wool Quilts and Salute Oliva. It is interesting to talk to the producers about their products and sampling is always good fun.

Contact: Simply Tomatoes and Aussie Quilts 5455 4237 and Salut  Oliva 5455 2652

## 4. Living memory

The museum in the former courthouse contains some important photographs of the local heritage including the local Aborigines and a great collection of artefacts of the early farming days in Boort.

Contact: 5455 2255

## 5. Rich Aboriginal History

Lake Boort has an extensive collection of scarred trees. The site of the lake is where aboriginal people cut away pieces from the trees to make canoes. There are hundreds of trees in the area left by the Dja Dja Wurrung people, plus trees with toe holds where men climbed for possums and to collect eggs. It is hard to imagine that all this history is in the centre of Boort.

Contact: [rvella@loddon.vic.gov.au](mailto:rvella@loddon.vic.gov.au)



# Why Work in Boort

---

## 6. Water Sports

During the Summer Months, Lake Little Boat becomes a hive of activity as boating enthusiasts take to the water. Many people enjoy water skiing or trying out the shalom course.

The lake attracts many people who enjoy a picnic or a walk to see the birdlife and other attractions.

Contact [www.boort.com.au](http://www.boort.com.au)

