



# Candidate Information

---

Chief Executive  
Officer

---



**CENTRAL  
GIPPSLAND  
HEALTH**





## About Central Gippsland Health

Central Gippsland Health (CGH) is a sub-regional health service and the major provider of health and aged care services in the Wellington Shire. CGH is located in the City of Sale which is 215km east of Melbourne. The City of Sale is an ideal access point for the magnificent Gippsland Lakes, 90 Mile Beach and the Victorian Alps.

CGH provides acute care as part of an integrated service delivery model across Wellington Shire and beyond. The service provides beds across three campuses (Sale, Maffra and Heyfield). Acute services include a full-time emergency department, critical care unit, neonatal critical care unit, three operating theatres, day procedure unit, oncology and dialysis services in addition to general medical and services and sub-acute services including rehabilitation.

CGH also provides aged care and community services in the Wellington Shire and beyond. We operate four residential aged care homes located in Sale, Maffra, and Heyfield, delivering high-quality, person-centred care in supportive and homelike environments.

CGH provides a wide range of community-based services that support people to remain healthy, active, and independent in their own homes. This includes the provision of Support at Home, Commonwealth Home Support Programs, and other in-home services tailored to individual needs.

Our integrated model of care is supported by a multidisciplinary allied health team offering physiotherapy, dietetics, occupational therapy, speech pathology, and social work. We also provide accessible public dental services to enhance community wellbeing.

CGH is also a leading teaching hospital, affiliated with Monash University's School of Rural Health and provides placements and clinical experience for students.

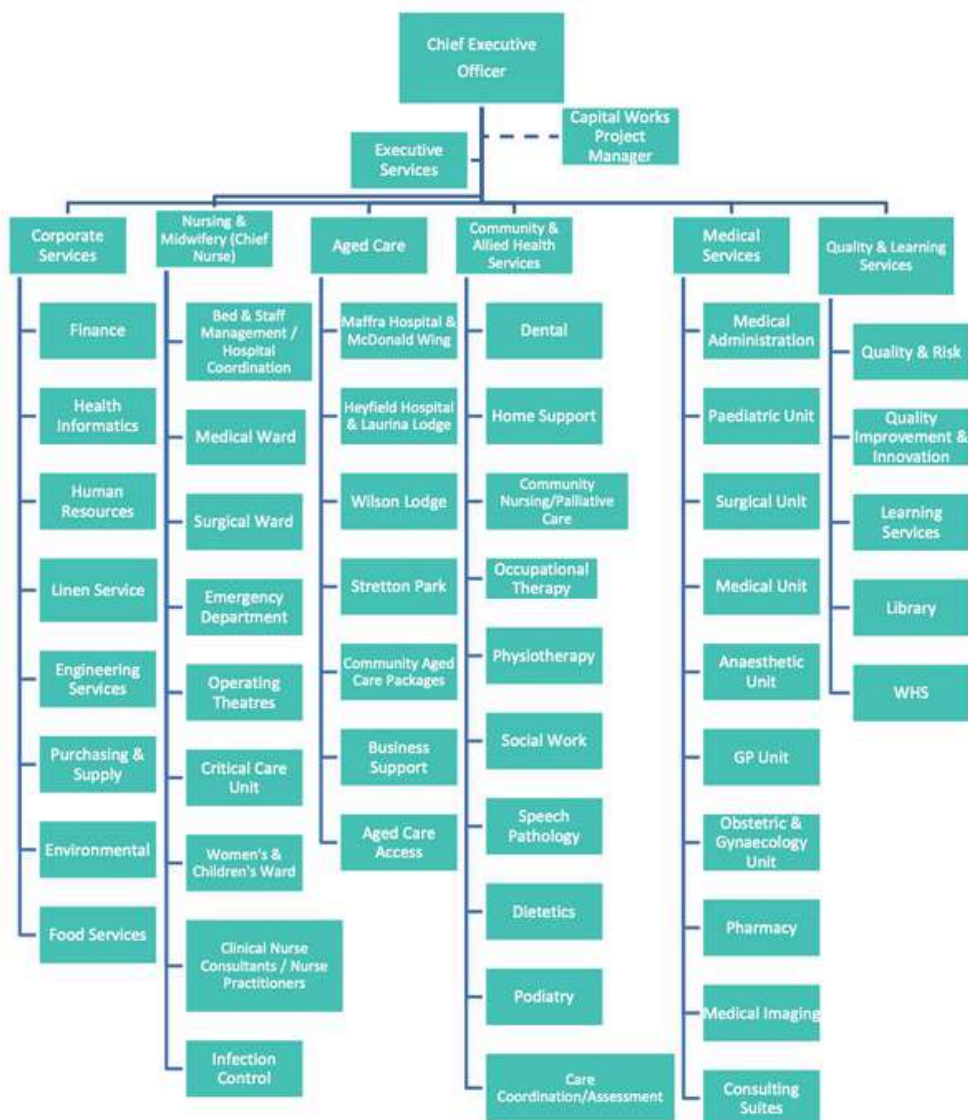
For more information please visit our website - [www.cghs.com.au](http://www.cghs.com.au) or click on QR code below to watch our video







## ORGANISATIONAL STRUCTURE







## Living in Gippsland

Gippsland offers a variety of natural attractions like nowhere else in Victoria. Unspoilt beaches, pristine rainforests, snowfields, hiking and riding trails provide backdrops for wineries and food producers, festivals for residents and tourists to indulge in all year long.

This eastern-most region of Victoria offers a dramatic variety of landscape and relaxed, welcoming communities that combine to create an undeniable allure.

Stretching from outer Melbourne to the eastern-most point of Victoria, Gippsland is the powerhouse of Victoria's natural resources and commodities economy.

Gippsland is home to the state's electricity industry and other key sectors such as agriculture, forestry, dairy, fishing, tourism, engineering, finance, health care and education.

Art and cultural festivals abound, and the gourmet food and wine on menus throughout the region make it a sensory feast.

In Gippsland you can build and enjoy a life like nowhere else





## Purpose of the Position

To manage Central Gippsland Health Service in accordance with Board policies, By-laws and Instrument of Delegation, to achieve the health service's strategic mission, goals and objectives and in a manner consistent with the organisations agreed values.

The Chief Executive works in a highly complex environment that requires the incumbent to interact effectively with the Boards of Management, staff, health service auxiliaries, community consultation and network groups and a variety of other stakeholders.

The Chief Executive provides leadership, guidance, support and feedback to management, staff and VMOs of the health service, ensuring effective and efficient planning and delivery of health services in accordance with CGHS strategic directions. Externally, the Chief Executive establishes and maintains a network of contacts with key stakeholders including: other public and private health service providers; Department of Health (DH), Department of Health and Aged Care, senior officers; local government staff and elected officials; members of parliament; Wellington Primary Care Partnership; East Gippsland Division of General Practice; Federation University, Monash University, Gippsland and East Gippsland Clinical Schools; other Universities and Training providers; VHIA and VHA; community groups; Australian Council for Healthcare Standards and other relevant quality accreditation agencies.

Such a network is necessary for the position to support compliance with relevant policy, procedure, legislation and to ensure services provided reflect the needs of the community and are delivered in a manner which is cost efficient, cost effective, of high quality and in a manner consistent with CGHS and public sector values.





## Key Selection Criteria / Job Requirement Criteria

### Mandatory:

1. Tertiary qualification in Commerce, Business Management or Health
2. Relevant postgraduate qualification/s and or technical qualifications
3. Membership of relevant professional college/organisation

### Other:

1. Substantial and proven experience in the management of health services and resources with a significant background in health service management at a senior level
2. Detailed knowledge of the health industry, particularly the public hospital, residential aged care and primary health and community services sectors
3. Excellent understanding of management issues in complex organisations, principles of health service evaluation, quality and OH&S
4. A proven record of sound financial management, human resources management, clinical governance principles and Australian health care systems and regulations
5. Sound understanding of public health sector governance and experience working with a Board of Directors
6. Ability to demonstrate the CGHS Leadership and Management Capabilities at the senior manager level
7. Ability to demonstrate technical capabilities associated with the role

## Remuneration

The role is Full Time.

A three (3) year contract with a competitive remuneration package dependent on experience and qualifications will be negotiated with the successful applicant. The remuneration package will be based on the Health Executive Employment and Remuneration (HEER) Policy (v2.0). Annual Remuneration Statement for Victorian Public Health Sector Executives – 1 July 2024. CGH is a Group 3 entity under the current HEER policy.

The TRP is inclusive of:

- Base Salary
- Superannuation

Other benefits:

- Salary packaging benefits
- Relocation support

---

## How to Apply

Applications should include a:

- Covering Letter
- Current CV
- Statement addressing the Key Selection Criteria; and
- Completed Application Form (available on the HRS website).

Applications can be lodged online via the HRS website or by email at:  
**[hrsa@hrsa.com.au](mailto:hrsa@hrsa.com.au)**

**Applications Close: September 14th, 2025**

---

## Further Information

Jo Lowday  
Director  
Health Recruitment Specialists  
**0400 158 155**

**The kind of  
expertise that  
only comes  
from years of  
experience.**

